

America's Local Public Health Landscape during the COVID-19 Era



PROTECTING PATIENTS AND COMMUNITIES IN A GLOBAL PANDEMIC

53,600

People were hired by local health departments in 2020 to address COVID-19



1 IN 4

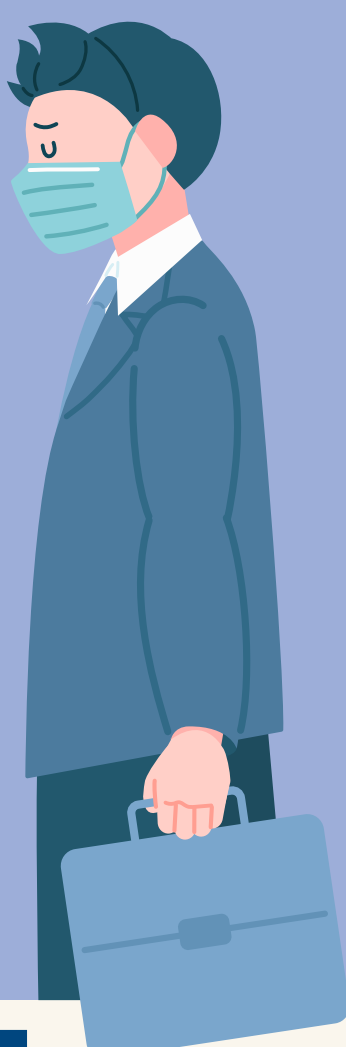
Dollars spent by local health departments in 2022 went to COVID-19 response



HEALTH DEPARTMENT CAPACITY REQUIRED TO ADDRESS COVID-19 WAS SUBSTANTIAL

1 IN 10

Local health departments reported resignations, reassignments, or firings due to political pressure



71%

Of local health departments were targets of harassment due to COVID-19 since March 2020



63%

Of local health departments that reported harassment received no protections in 2022

"I had people attempting to break into my house. I was attacked at the grocery store. I was mailed feces."

"Our epidemiologist was beat up so bad on phone calls. He was so traumatized he left public health."



HEALTH DEPARTMENT WORKERS FACED UNDUE HARDSHIP DURING COVID-19

Growth in local health departments expanding provision of select services in 2020 versus 2022



2020

2022

3%

18%

Drug Prevention

3%

14%

Maternal and Child Health

0%

9%

Obesity Prevention

HEALTH DEPARTMENT SERVICES ARE REBOUNDING TO PRE-COVID-19 LEVELS

ABOUT THE DATA IN THIS INFOGRAPHIC

This infographic is a snapshot of the 2022 National Profile of Local Health Department (Profile) study administered by the National Association of County and City Health Officials (NACCHO). Profile is conducted every three years to develop a comprehensive description of the local health department (LHD) landscape. The 2022 survey was distributed in May 2022 to 2,513 LHDs; a total of 942 responded (37% response rate).

This infographic also features data from NACCHO's 2020 Forces of Change (FOC) survey, which aimed to assess changes in LHD capacity driven by COVID-19. The 2020 survey was distributed in October 2020 to 2,392 LHDs; a total of 583 responded (24% response rate).