

Substance Use Data

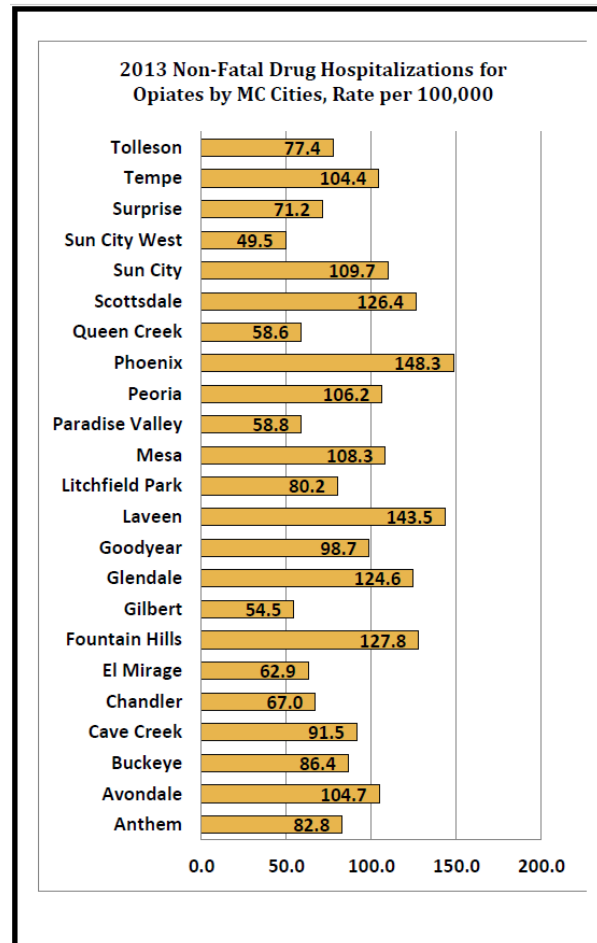
Maricopa County, AZ

Data Sources

- Hospital discharge data
- Death certificates
- Toxicology reports from Medical Examiner
- Syndromic Surveillance
- Poison Control Center

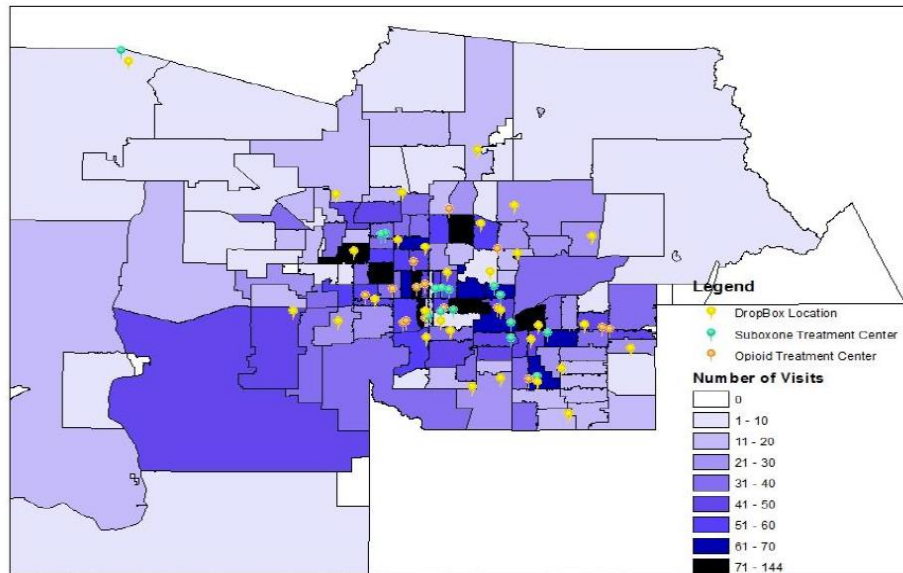
Partnership with Arizona Criminal Justice Commission

- Awarded the Harold Rogers Prescription Drug Monitoring Grant from Department of Justice (2014)
- Goals: Reduced Death, ER Visits, Increased usage PDMP & RX awareness
- Previously piloted in Yavapai, Pinal, Graham/Greenlee, & Mohave

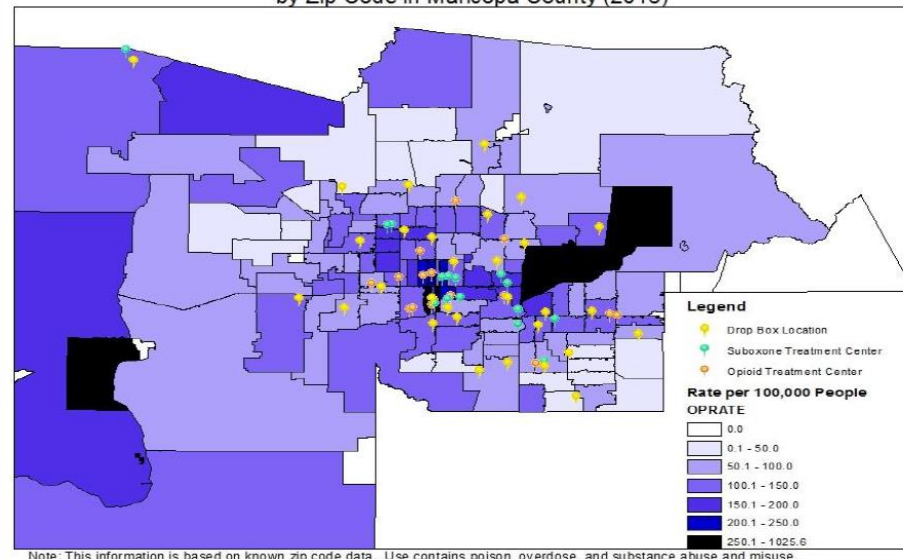


- MCDPH focus-increase public awareness, patient education
- Role: find areas in county with highest numbers of deaths, gather data on nonmedical use

Number of Non-Fatal Inpatient Hospital Admissions due to Opiate Use
by Zip Code in Maricopa County (2013)



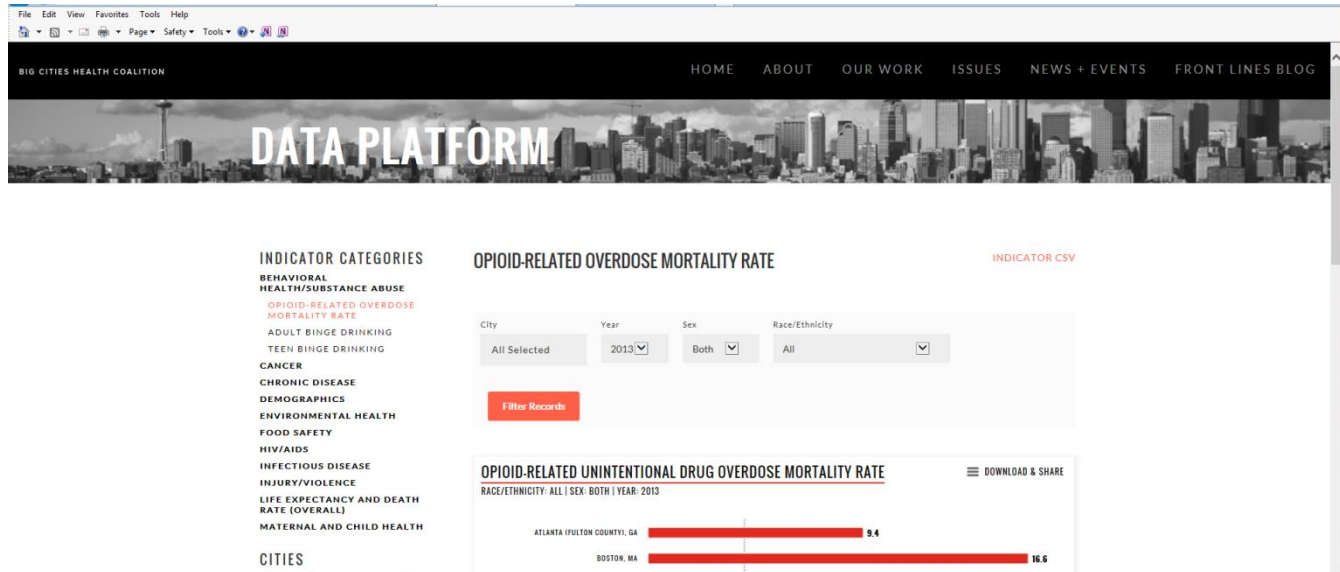
Rate of Non-Fatal Inpatient Hospital Admissions due to Opiate Use
by Zip Code in Maricopa County (2013)



0 3.5 7 14 21 28 Miles



Big Cities Health Coalition Data Platform



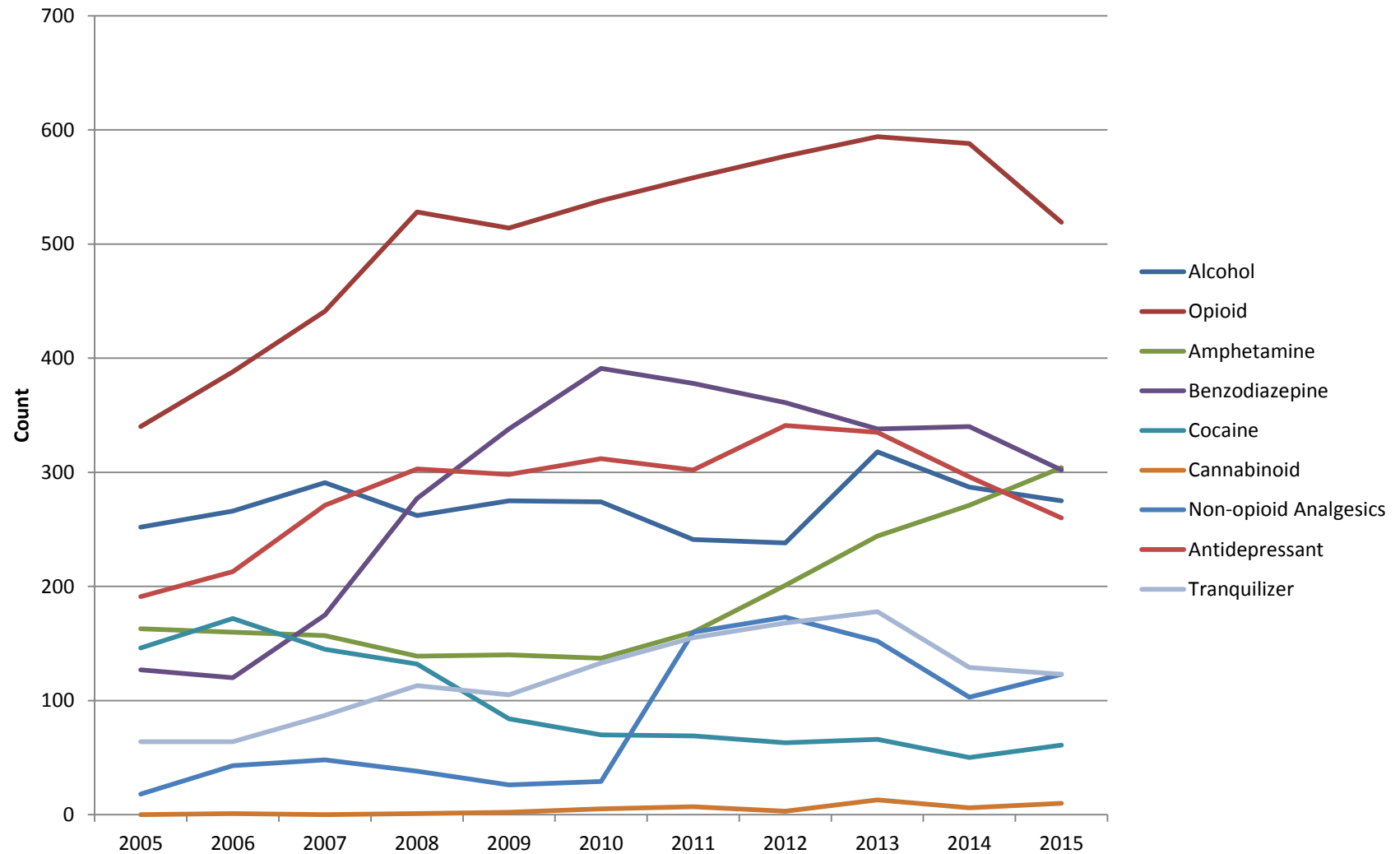
- Opioid-Related Unintentional Overdose Mortality Rate
- Age-adjusted
- ICD-10 codes include: X40-X44 (intentionality); AND one or more of the following in any multiple cause of death field: T40.2, T40.3, T40.4 (other opioids, methadone, other synthetic narcotics).

CSTE Recommendations

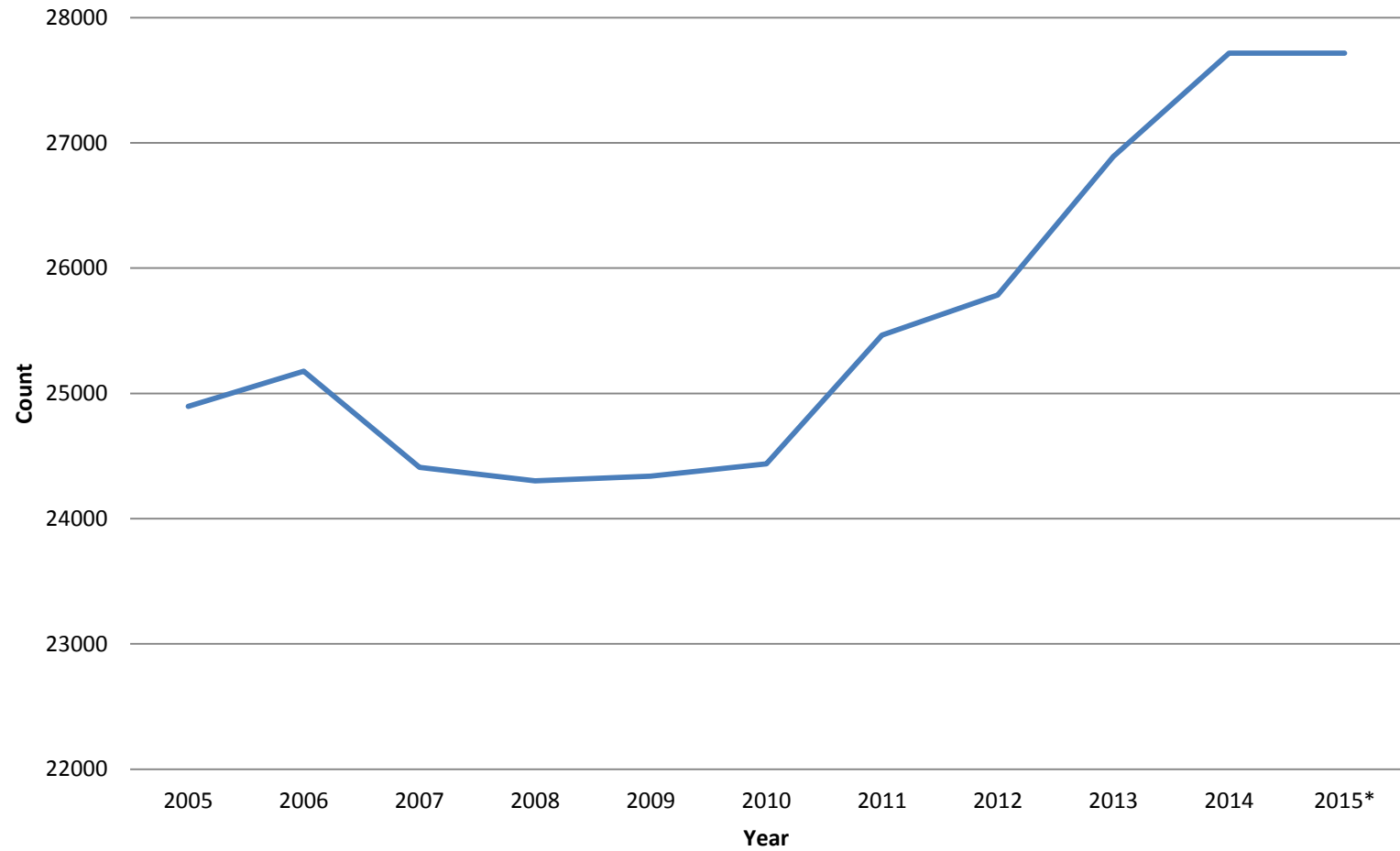


- Drug Overdose Mortality
- ICD-10 codes as an underlying cause of death: X40–X44, accidental poisoning by drugs; X60–X64, intentional self-poisoning by drugs; X85, assault by drug poisoning; Y10–Y14, drug poisoning of undetermined intent.
 - opium (T42.0),
 - heroin (T40.1),
 - codeine and morphine (T40.2),
 - methadone (T40.3),
 - other synthetic narcotics (T40.4),
 - cocaine (T40.5),
 - other and unspecified narcotics (T40.6),
 - cannabis (T40.7),
 - lysergide (T40.8),
 - other unspecified psychodysleptics (T40.9),
 - benzodiazepines (T42.4),
 - psychostimulants with abuse potential (T43.6)

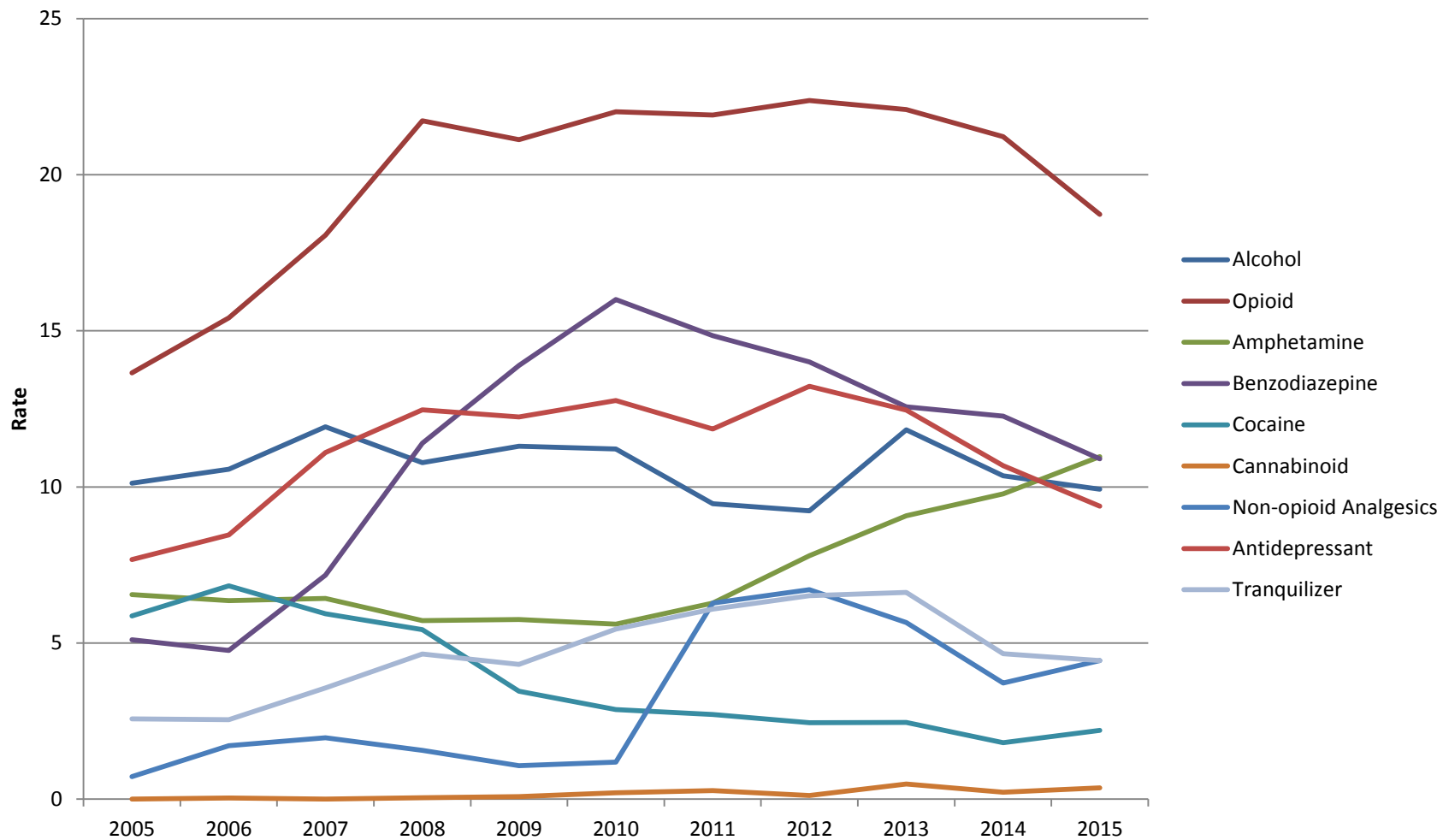
Count of all Substance-Related Deaths Maricopa County, 2005-2015



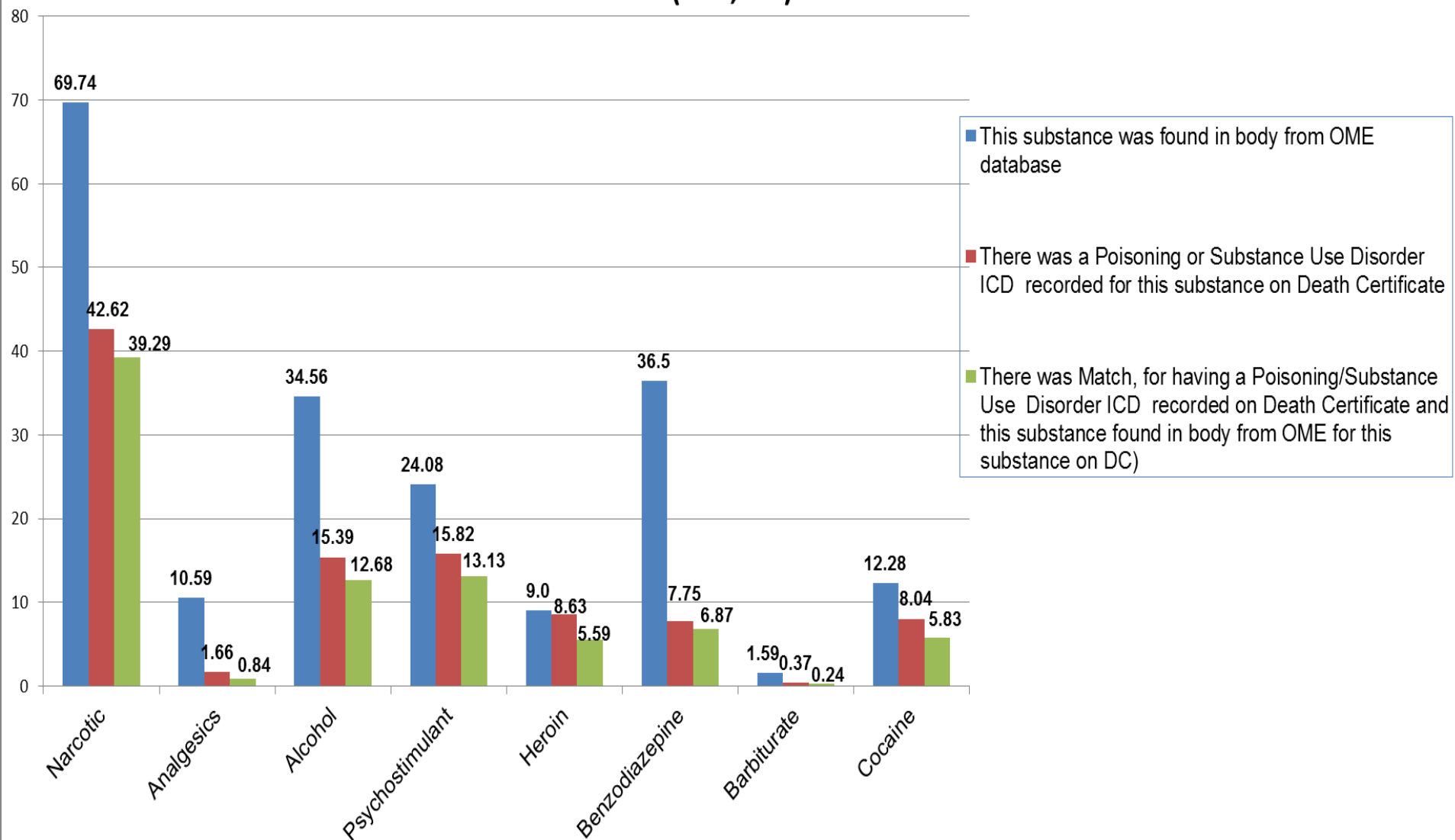
Total Deaths in Maricopa County



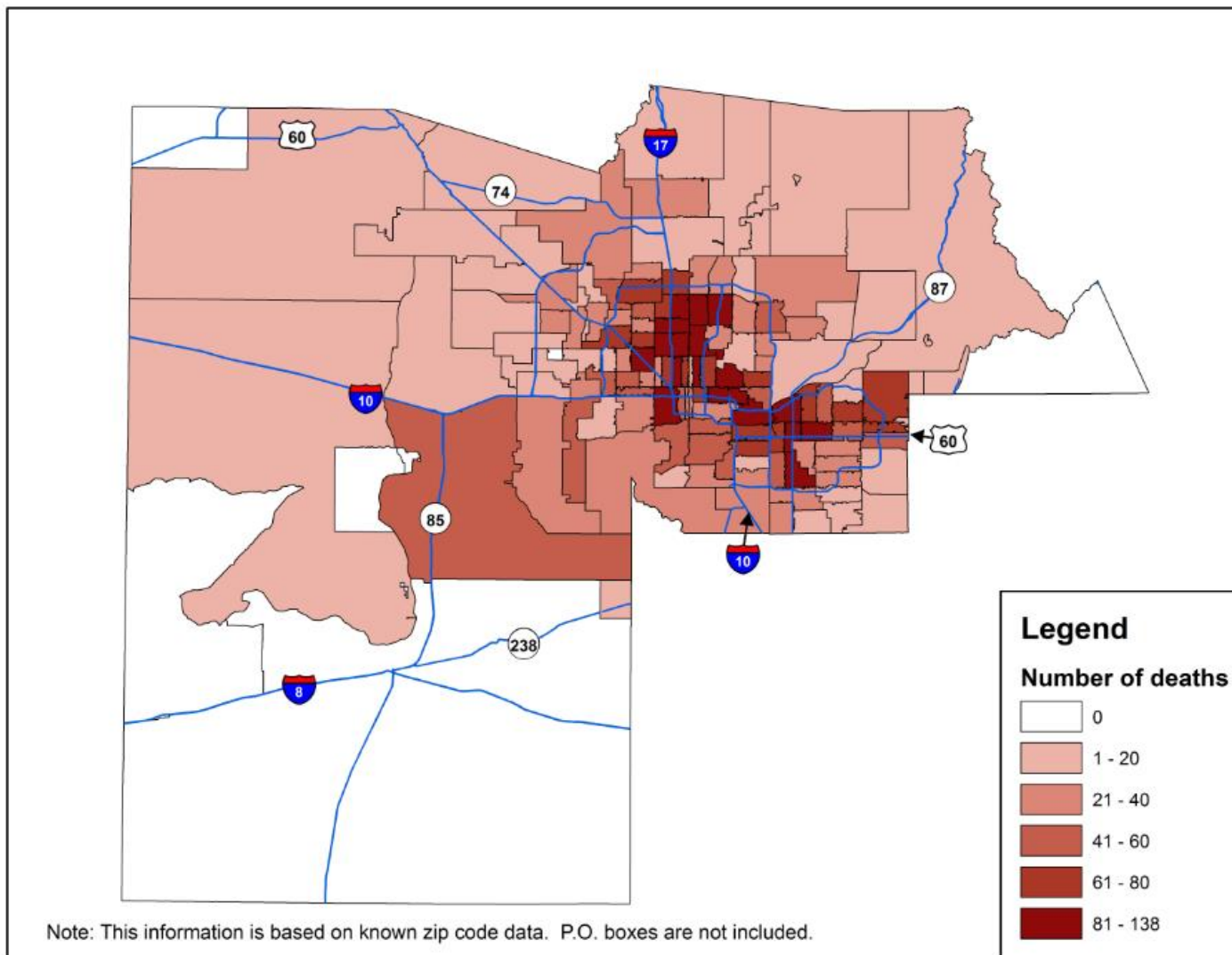
Cause-Specific Substance-Related Death Rate per 1,000 Deaths, Maricopa County, 2005-2015



Percent of Substance of interest found in OME database vs. in Death Certificate - 2005-2015 (N=8,622)



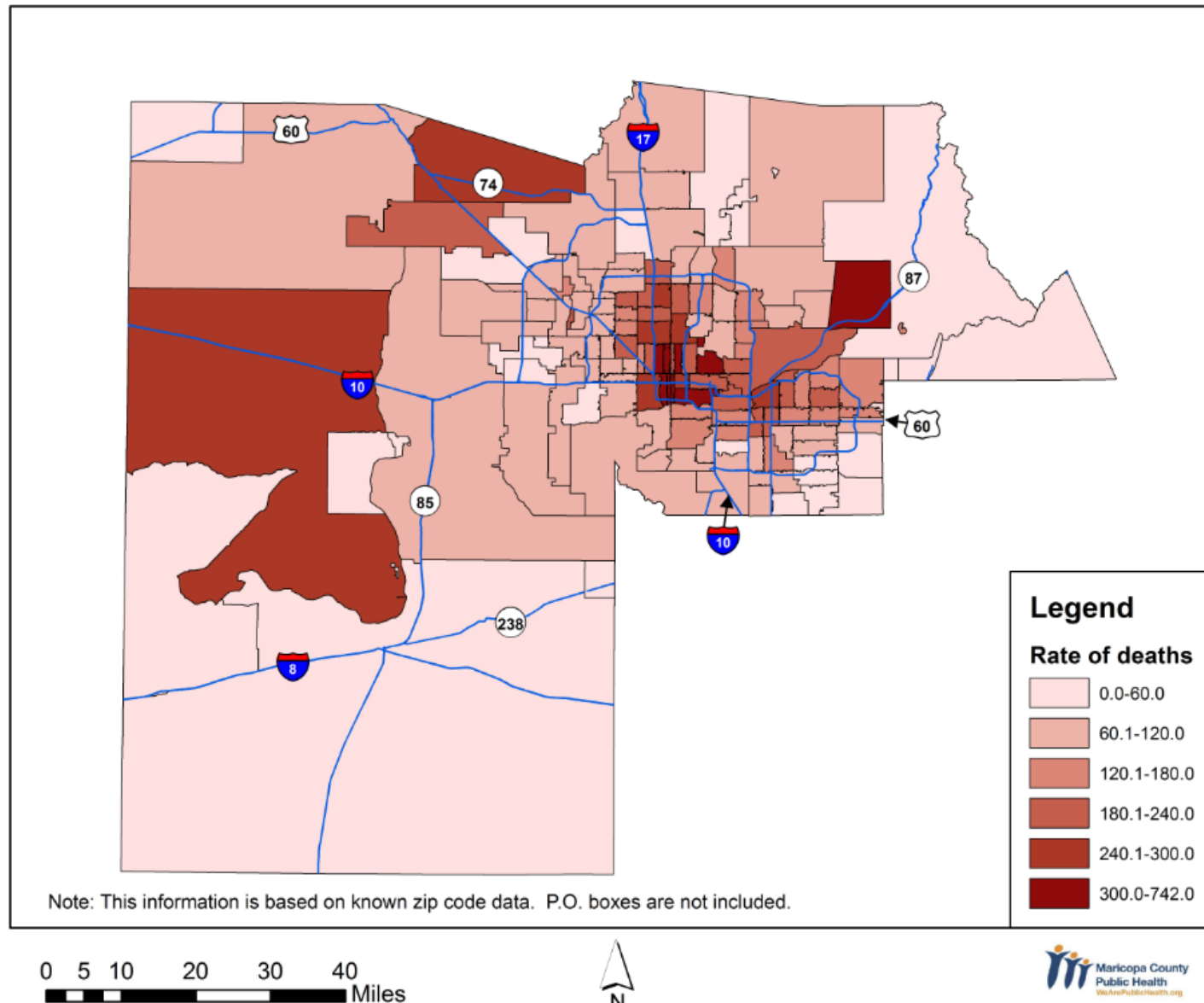
Opiate deaths examined by Office of the Medical Examiner (OME)
by location of the drug overdose event, by zip code, Maricopa County, 2005-2015



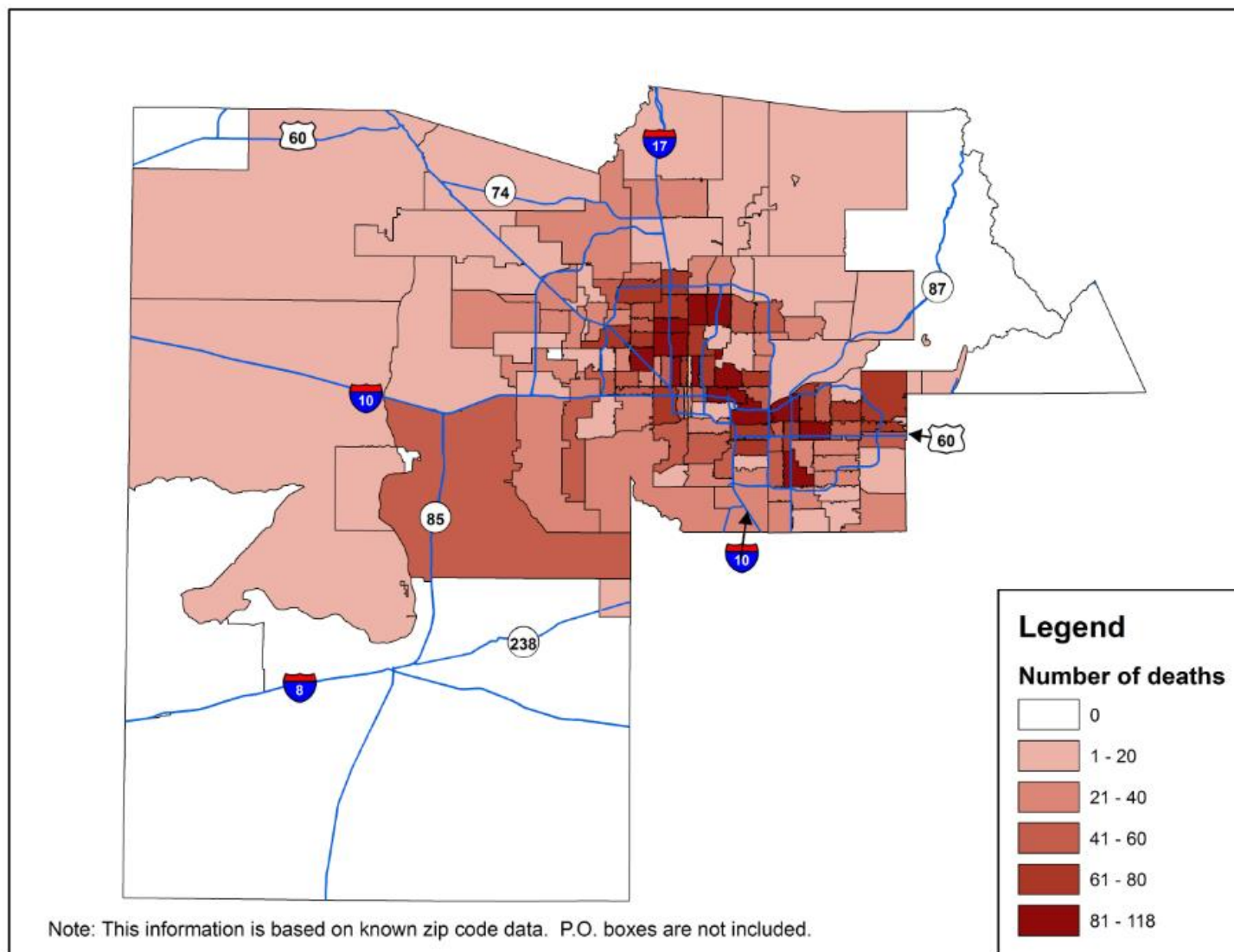
0 5 10 20 30 40
Miles



Rate of opiate deaths examined by the Office of Medical Examiner (OME)
by location of the drug overdose event, by zip code, Maricopa County, 2005-2015



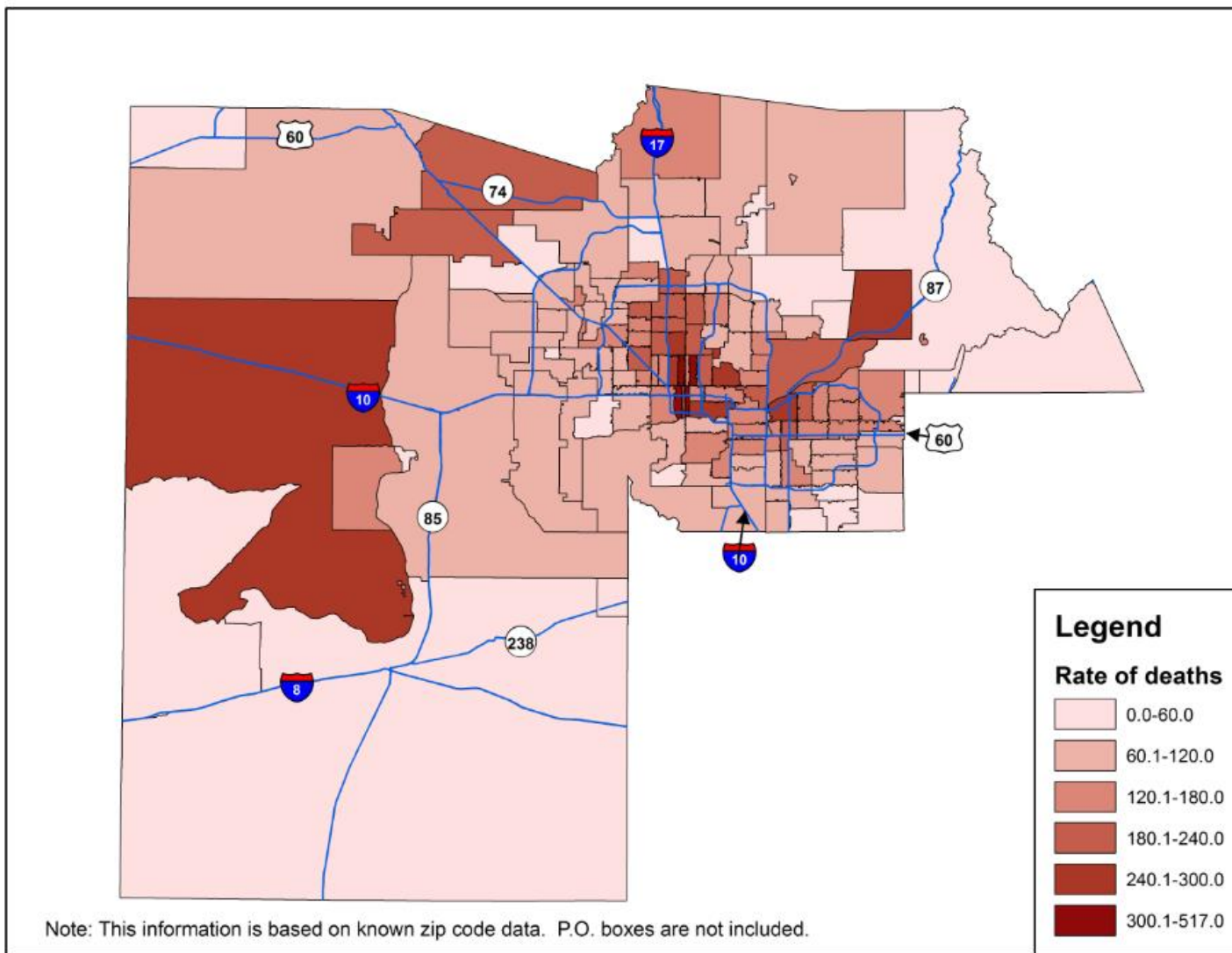
Opiate deaths examined by the Office of Medical Examiner (OME)
by zip code of residence, Maricopa County, 2005-2015



0 5 10 20 30 40
Miles



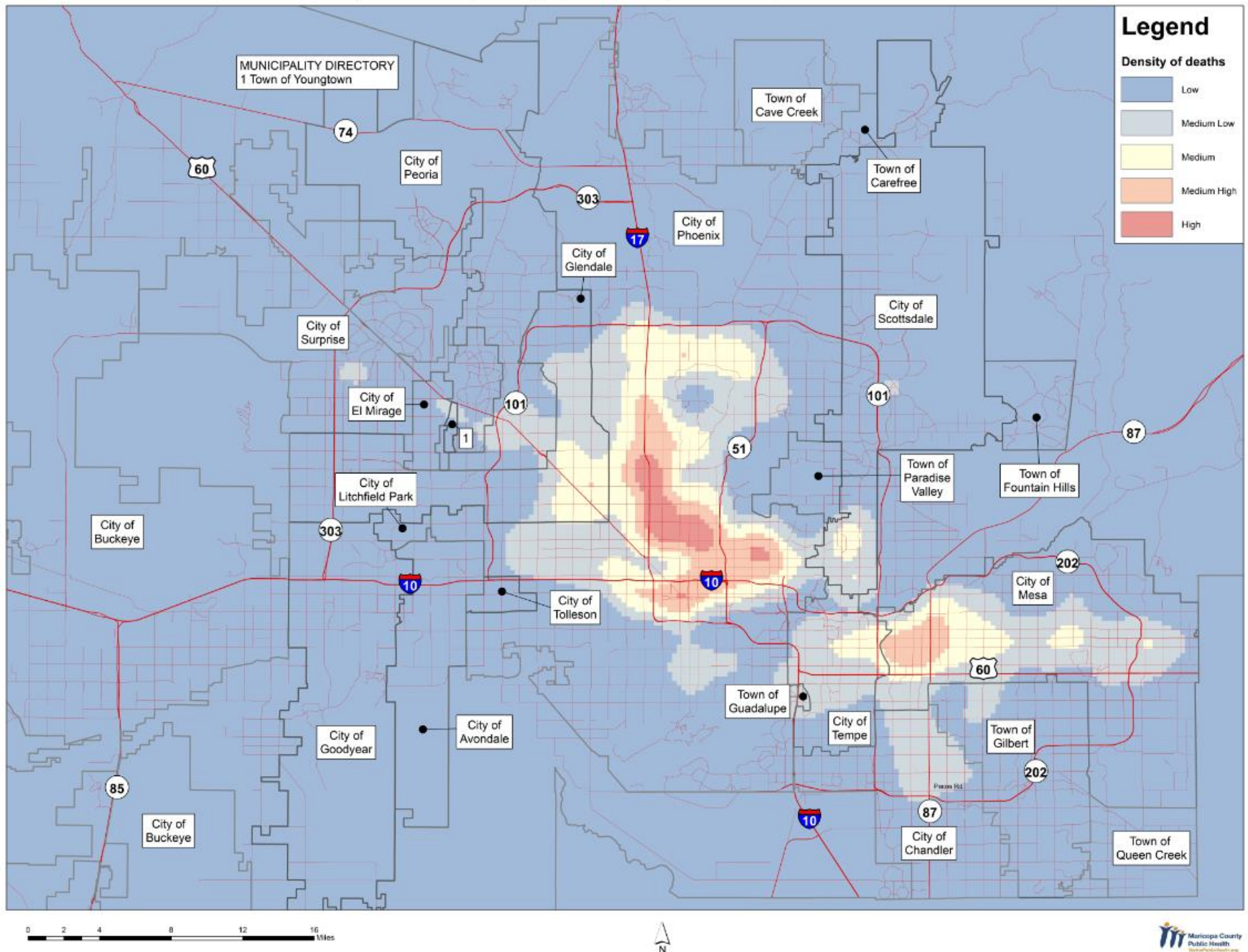
Rate of opiate deaths examined by the Office of Medical Examiner (OME)
by zip code of residence, Maricopa County, 2005-2015



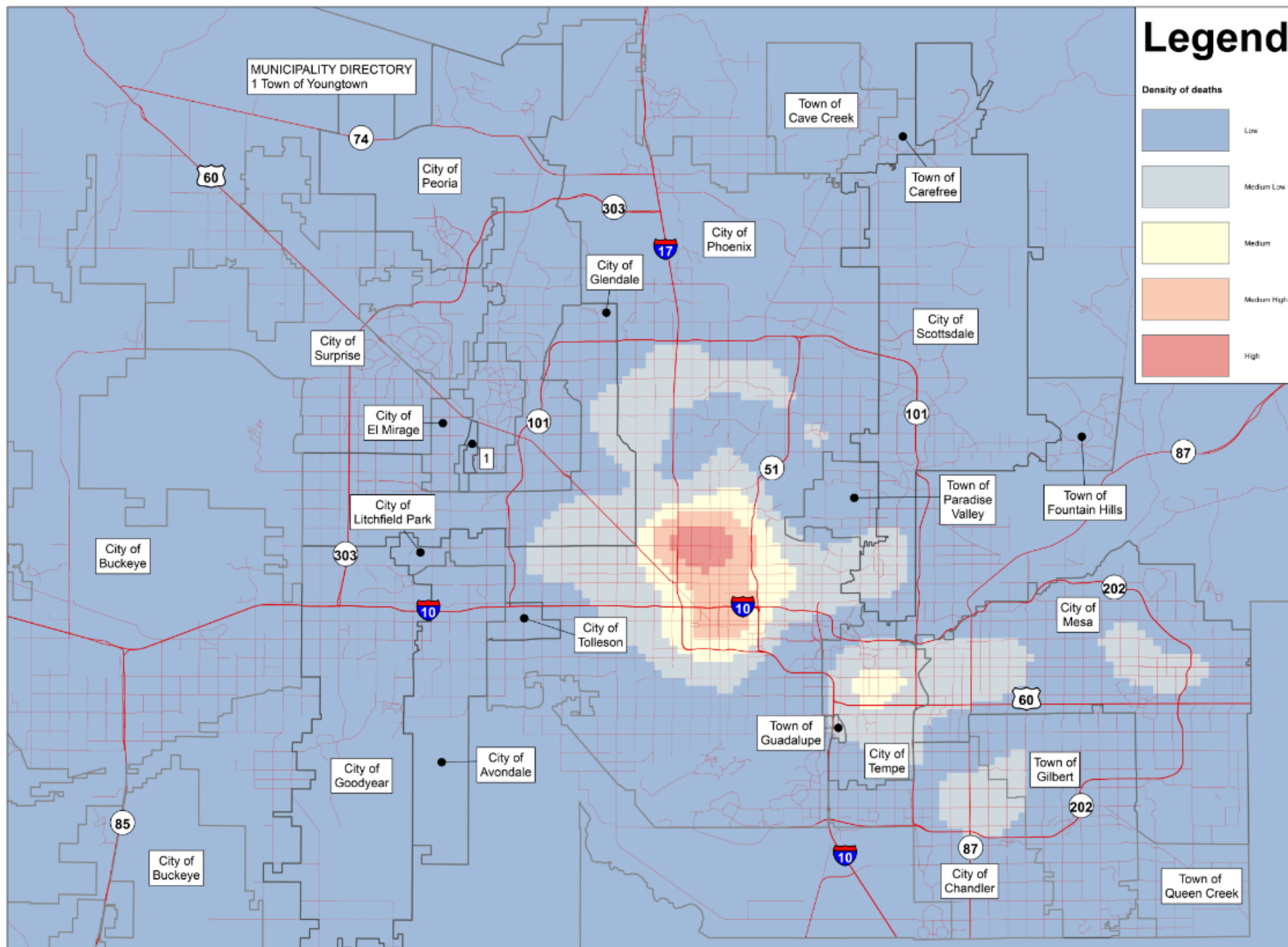
0 5 10 20 30 40
Miles



Density of opiate deaths examined by Office of Medical Examiner (OME)
by location of drug event by zip code, metropolitan Phoenix, 2005-2015



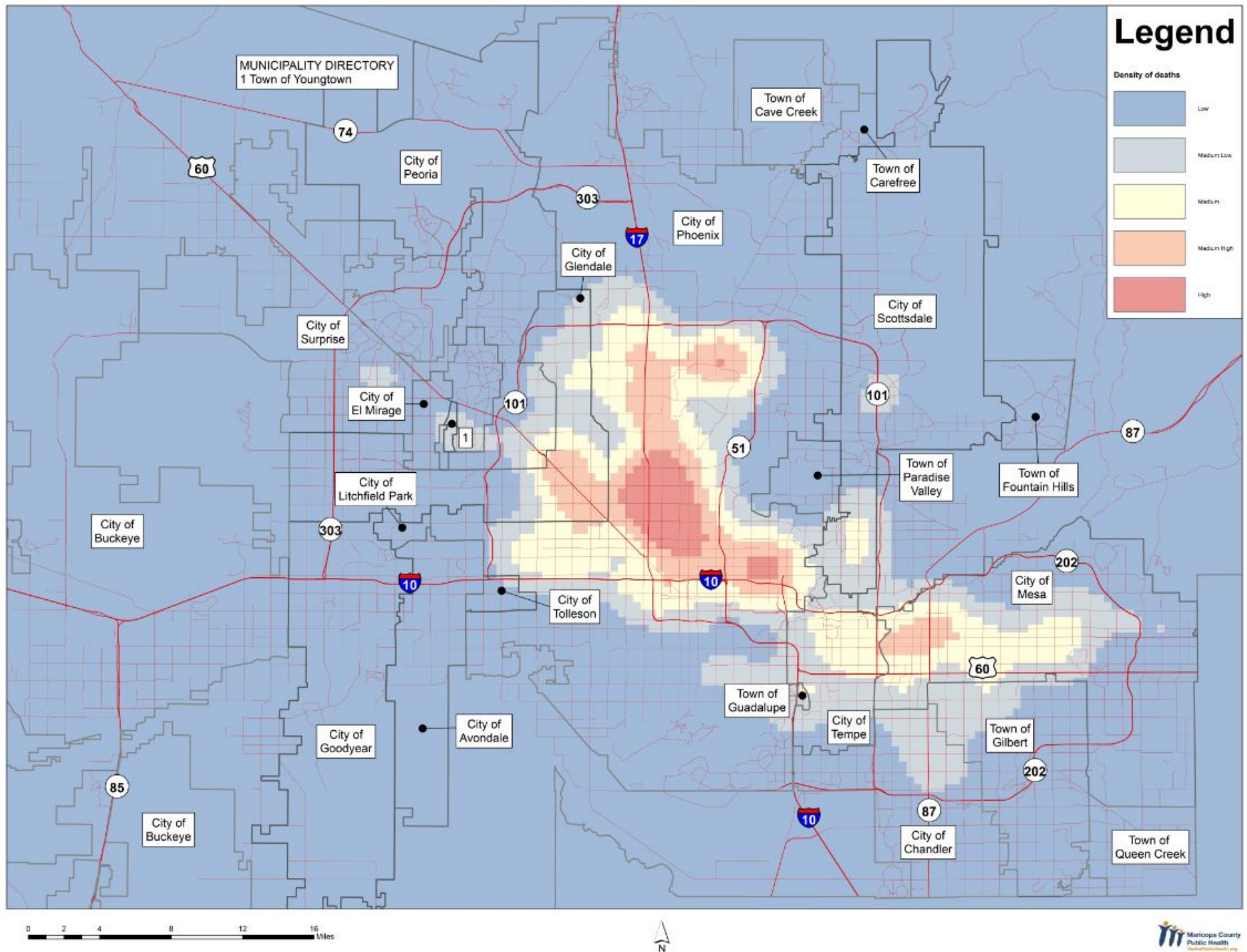
Density of opiate deaths examined by Office of Medical Examiner (OME)
by location of drug event by zip code, metropolitan Phoenix, 2005



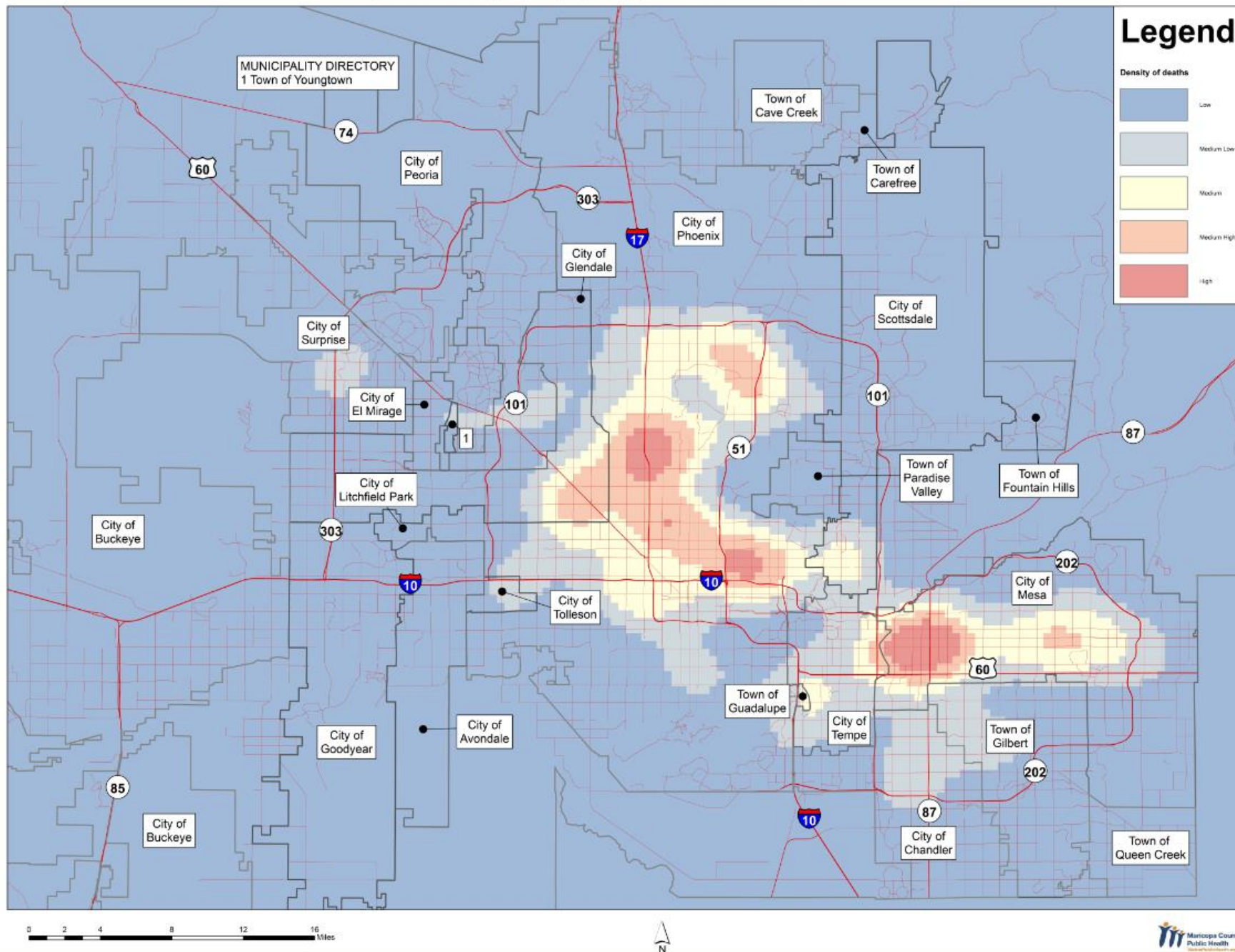
0 2 4 8 12 16 Miles



Density of opiate deaths examined by Office of Medical Examiner (OME)
by location of drug event by zip code, metropolitan Phoenix, 2010



Density of opiate deaths examined by Office of Medical Examiner (OME)
by location of drug event by zip code, metropolitan Phoenix, 2015



Questions?

Kate Goodin

Maricopa County

KateGoodin@mail.maricopa.gov